



Duckett Street, London, E1

BUTLER & STAG



Guide Price £450,000 to £475,000
Welcome to this beautifully presented two-bedroom apartment in the sought-after Santa Maria Court on Duckett Street. Spanning nearly 750 sq ft, this home offers generous living space, high-quality finishes and a private southwest-facing balcony that bathes the apartment in natural light throughout the day — perfect for relaxing, dining or entertaining outside.



Leasehold

- Two Double Bedrooms
- Chain Free
- Private South/West Facing Balcony
- Resident Only Gardens
- Beautifully Presented Throughout
- Lift Access
- Duel Aspect
- Close To Amenities

Step into a bright and inviting open-plan living/dining room that provides plenty of room to unwind or entertain. Large glazing and thoughtful layout create a sense of spaciousness and effortless flow throughout.

A standout feature of this apartment is the balcony with southwest exposure — enjoy sunshine in the afternoons and evenings, ideal for summer barbecues, leisurely breakfasts or simply soaking up the views.

The well-designed kitchen is fitted with contemporary units and integrated appliances, offering excellent storage, worktop space and a seamless look that complements the open living area.

First Bedroom: A comfortable double with room for wardrobes and bedside storage — calm, serene and well proportioned.

Master Bedroom: Also a generous double room, with plenty of natural light, built in wardrobe space and flexibility to suit your lifestyle.

The stylish bathroom is fitted to a high standard — clean lines, modern fixtures and quality tiling. Throughout the property, neutral décor and quality finishes create a warm and welcoming environment.

Thoughtful storage solutions help keep everyday items organised, while the overall layout maximises usability and comfortable living.

Santa Maria Court benefits from a well-connected, sought-after location on Duckett Street, with local amenities, transport links and green spaces close by. The area has a friendly community feel, yet remains close to urban conveniences.

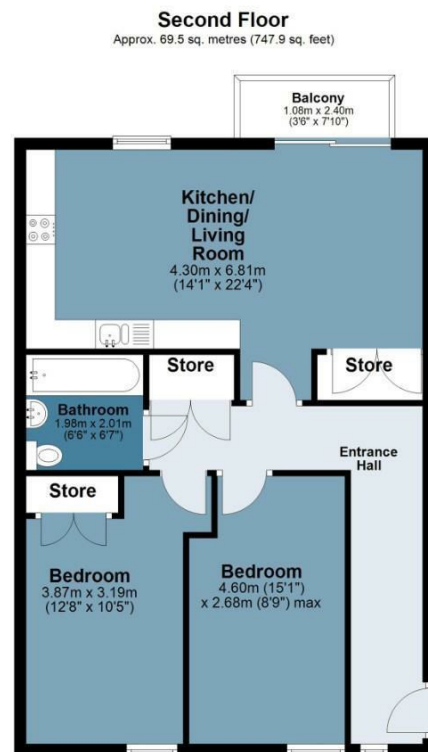




Santa Maria Court

Approx. Gross Internal Area 69.5 Sq M (747.9 Sq Ft)

BUTLER & STAG



Measurements are approximate and for illustration purposes only. While we do not doubt the accuracy and completeness, we advise you conduct a careful independent assessment of the property to determine monetary value.
© @modephotouk www.modephoto.co.uk

IMPORTANT NOTICE - These particulars have been prepared in good faith and they are not intended to constitute part of an offer or contract. We have not performed a structural survey on this property and the services, appliances and specific fittings have not been tested. All photographs, measurements, floor plans and distances referred to are given as a guide and should not be relied upon.

BUTLER & STAG

☎ 020 8102 1236

🏠 508 Roman Road, Bow, London, E3 5LU

✉ bow@butlerandstag.com

www.butlerandstag.uk